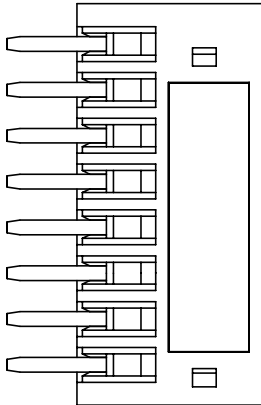
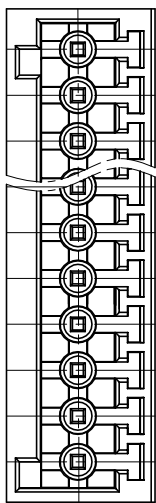


02P

08P

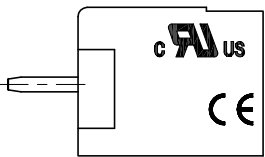
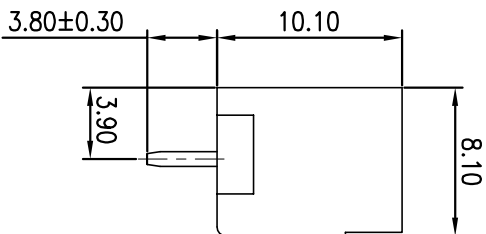
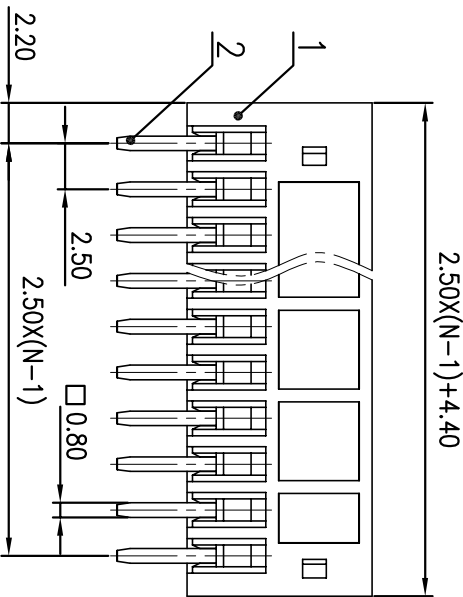
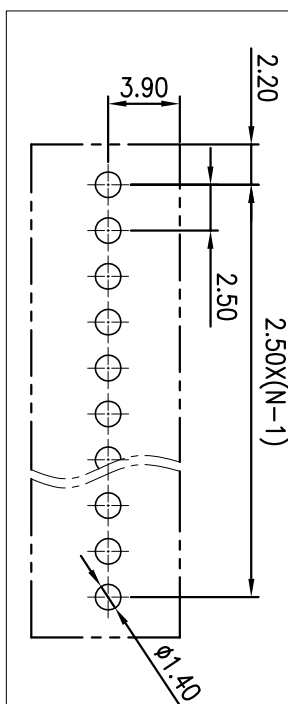


8P and 8P following no reinforcement.



PCB LAYOUT

2.50X(N-1)



公差 (General tolerances)(mm)	
0	>3
~	~
3	~6
~	>10
6	~18
~	>18
10	~30
~	>30
18	~50
~	>50
30	~80
~	>80
50	~120
~	>120
80	~180
~	>180
120	~250
~	>250
180	~315
~	>315
250	~400
~	>400
315	~500
~	>500
400	±2.20
~	±2.50
500	
~	
±0.12	±0.18
±0.22	±0.26
±0.31	±0.37
±0.57	±0.80
±1.05	±1.05
±1.15	±1.60
±2.20	±2.50

MATERIAL:	
MAT NO.:	
STATUS:	
APPD:	
CHKD:	
DRAFT:	
SIZE: A4	
TYPE:	
SCALE:	
SHEET	1/1

宁波三安电子科技有限公司
Sanan Electrical Technology Co. Ltd

NAME: 15ESAWC-2.5-XXP-1Y-00A(H)

2	Pin	Copper alloy	Sn Plated
1	Housing	PA66	UL94V-0
ITEM	NAME OF PART	MATERIAL	NOTES
II. 标准/UL Standard:		B	C
III. 标准/IEC Standard:		150/4	/
额定电压/电流/Rated Voltage(V)/Current(A)		III/3	II/2
过压类别/Overvoltage Category/污染等级/ Pollution Degree			
额定电压/电流/Rated Voltage(V)/Current(A)		/	250/5
额定脉冲电压(KV)/Rate Impulse Voltage(KV)		/	Z.5
间距/Pitch(mm)/线数范围/Poles		2.50/N=02~12P	
使用温度范围/Operating temperature(°C)		-40~+105	
符合RoHS环保要求/Conform to RoHS		Yes	

SURFACE: